

Framing Hawaii's Bottomfish Fishery



Pacific Islands

- Island communities – Ocean people
- Livelihood is dependent on marine resources
- Fishing and seafood is integrated into culture and heritage
- Pacific Islanders consume three times more seafood than the national average
- Some of the most diverse fisheries in the US

...and least understood

- One multi-species stock assessment for deep water bottomfish (6 snappers and one sea bass).
- Stock Assessments for two coastal pelagics – jacks
- **No Stock assessments for coral reef species**

Bottomfish Fishery

- Hook and line fishery only (all other gears banned)
- Shallow water Bottomfish Fishery (60 -200 ft)
- Deep water Bottomfish Fishery (200 – 1,200 ft.)

Hawaii's Deep 7 Bottomfish Species

Longtail Snapper - Onaga
Hawaiian Sea Bass - Hapu'upu'u
Brigham's Snapper - Gindai
Squirrelfish Snapper - Ehu
Silverjaw Snapper - Lehi
Pink Snapper - Opakapaka
Von Seibold's Snapper - Kalekale

Other Bottomfish Species:

Gray Jobfish - Uku
Blue Stripe Snapper - Ta'ape
Yellowtail Snapper - Yellowtail Kalekale
Giant Trevally - White Ulua
Black Jack - Black Ulua
Thick Lipped Trevally Pig - Ulua, Butaguchi
Amberjack - Kahala



Deep 7 Fishery Management

- The MHI Deep 7 Bottomfish fishery is an open-access fishery managed by State and Federal agencies.
- There is recreational total bag limit of 5 Deep 7 per person per day.
- Owners of vessels used for targeting Deep 7 must register with the State of Hawaii.
- Anyone who fishes for and Deep 7 species in Federal waters (3-200 nm) around the main Hawaiian Islands (MHI) must have a Federal Non-Commercial Bottomfish Permit or a State Commercial Marine License (CML).
- There is an **ACL (Annual Catch Limit)** for MHI Deep 7 bottomfish set by NMFS as recommended by the Western Pacific Fishery Management Council.
- The State of Hawaii has also implemented **Bottom Fish Restricted Areas (BFRA's)** along with a minimum size of one pound for sale of onaga, opakapaka and uku.
- The NWHI bottomfish fisheries closed in 2011 by the Presidential proclamation that established the NWHI as a marine national monument.

Hawaii's Small Boat Recreational / Commercial Fishing Fleet



Typical Bottomfish Gear Used in Hawaii



Single and Multi Day Trips



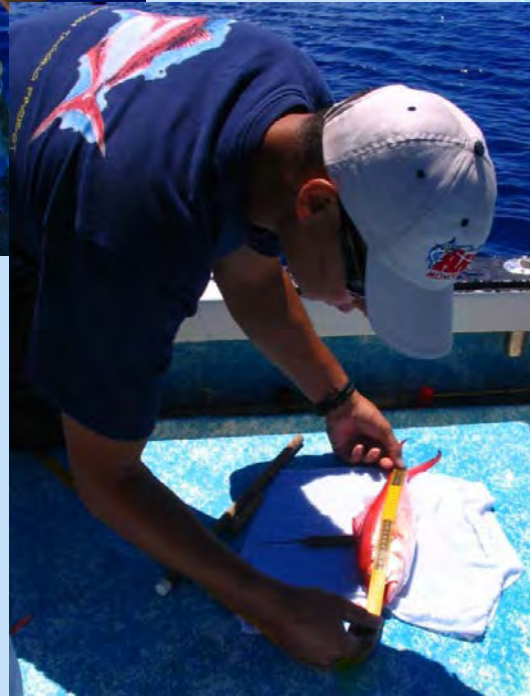
Cooperative Research Program (CRP)

To facilitate involvement of commercial and recreational fishermen in the collection of fundamental scientific fisheries information to support assessment of fishery resources, development and evaluation of management and regulatory regimes.

Project Objectives

- Expand the State of Hawaii bottomfish tagging project in include all Deep 7 species.
- Collect information to aid in determination of Growth Rates for the Deep 7 bottomfish species
- Monitor movement of these bottomfish species
- Assess species distribution by area
- Develop “safe” release method for deep 7 bottomfish species
- Support Cooperative Research with fishermen, NGO & government agency

Expand State of Hawaii Bottomfish Tagging Program to all Deep 7



Tagging Implements



Drop Shot



Hallprint plastic "Dart" tag & applicator



Venting Tool & Push stick



"Drop Chute"

Release Procedure



Venting

Hook up
"Drop Shot"



Push in stomach
(if necessary)



Release



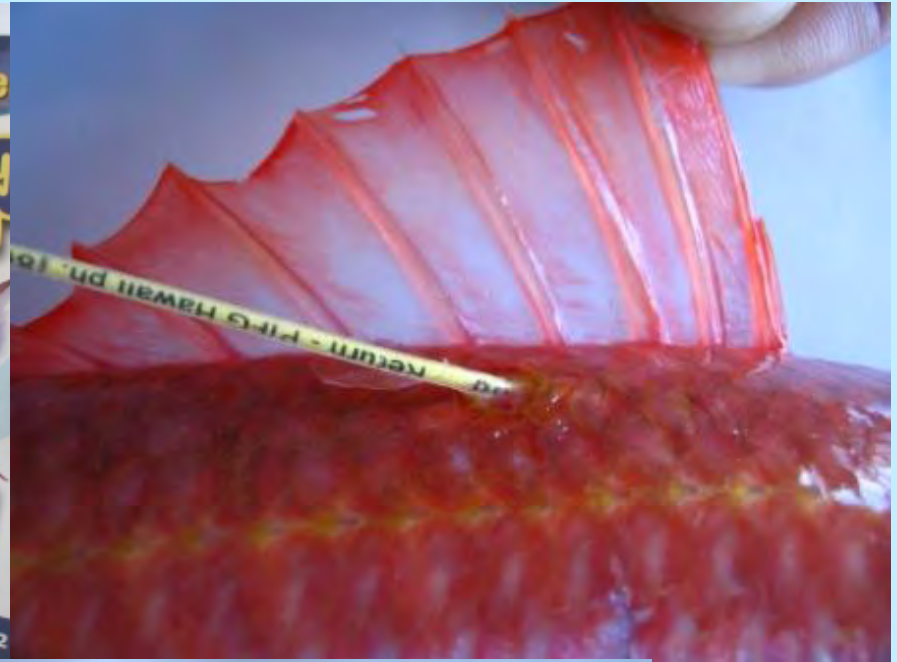
Barotrauma Treatment Results

Type of Release Treatment Used

Treatment:	Purge only	Drop Shot only	Both Drop & Purge	No Treatment	Total Recovered
('07/'10)	35	1	3	2	41
('10/'11)	29	3	10	-	42
Total	64	4	13	2	83



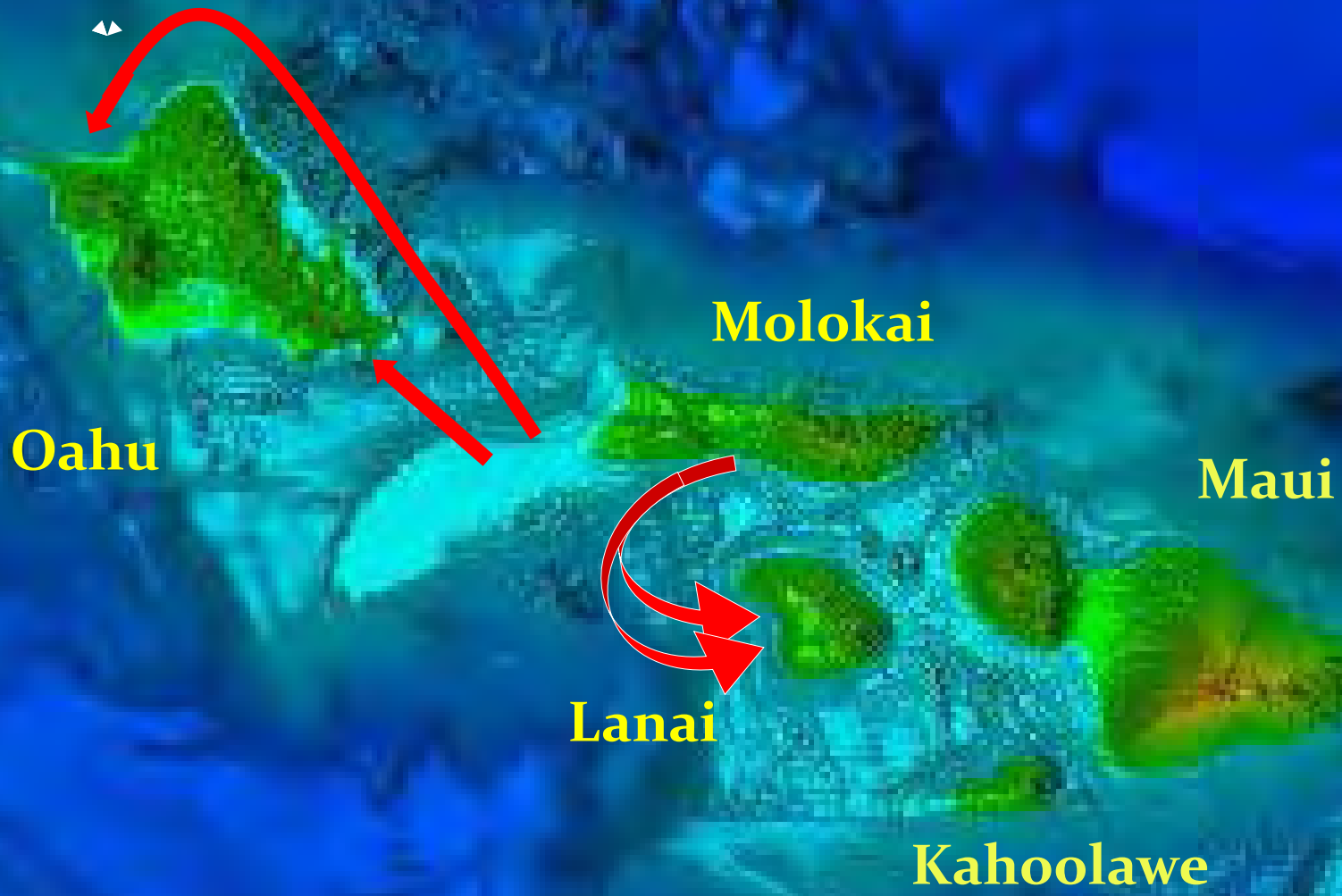
Recoveries



First tagged
Ehu ever
recovered
in Hawaii



Inter Island Opakapaka Travel



A large quantity of fish is laid out on a white surface, possibly a table or a large sheet. The fish are arranged in several rows. The top rows consist of smaller fish, some with reddish-pink bodies and others with yellowish bodies. At the bottom of the arrangement is a single, much larger fish with a greyish-silver body. The background is a light blue surface, possibly a boat deck or a large table. The text "Fish Today, For Fish Tomorrow" is overlaid in the center in a yellow, serif font.

**Fish Today,
For Fish Tomorrow**

